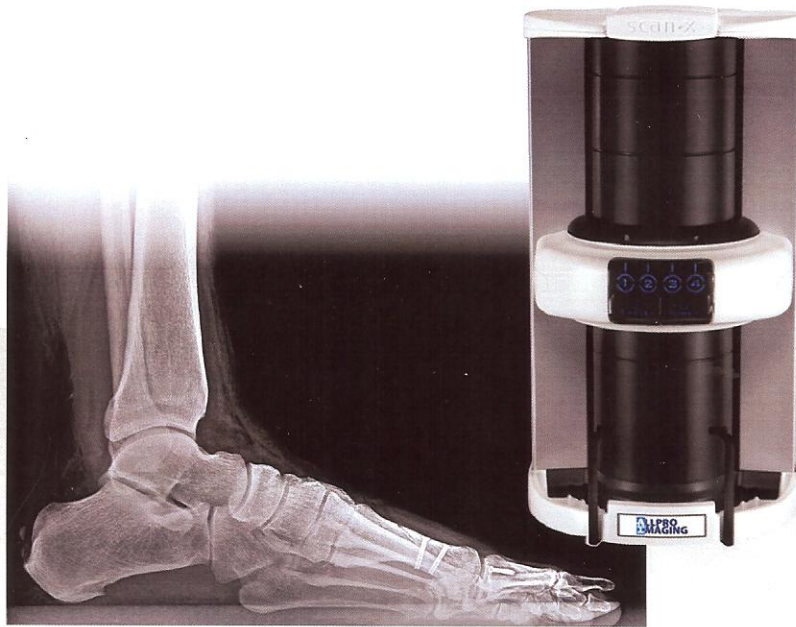


# ScanX®12 SE

Acquire | Store | View | Share

## Easy and Affordable Digital Imaging



### Reliable, Lightweight and Cost Effective

The ScanX®12 SE features sharper digital images that are processed in approximately 20 percent less time than the previous model. A standard 10" x 12" phosphor imaging plate is now scanned and ready for viewing in about 30 seconds, and an 8" x 10" plate can be viewed in about 25 seconds. Improved transport functionality helps to extend plate life with less plate wear. The ScanX®12 SE is also very easy to operate due to the simplified status LED panel.

To complement your ScanX®12 SE, you need imaging software to acquire, store, view and share images. TigerView, a Televere Systems product, will significantly update your work flow for better patient management and diagnosis. Quickly and easily access all digital image files and share them with colleagues and patients alike. Window leveling and viewer enhancement tools allow for complete control of image display.

Tiger View measurements include Cobb's Angle, Inter-Metatarsal Angle and Hallux Abductus Angle. TigerView allows for stacking of both measurements and annotations to achieve more Podiatry measurements. Other measurements you can accomplish with stacking include Metatarsus Abductus Angle, PASA-Proximal Articular Set Angle, Hallux Valgus, Tangential Angle to the Second Axis, Distal Articular Set Angle, Metatarsal Joint Articulation, Distal Articular Set Angle, HAIP – Hallux Abductus Interphalangeus Angle, TCA – Talo-Calcaneal Angle, TNA – Talo-Navicular Angle, CAA – Cuboid Abduction Angle and Kite's angle.



55 LBS

55 lbs.



Compact Footprint



Dimensions (W x L x H): 14" x 14" x 28"



Extremely Fast

- View two images exposed on one 10" x 12" plate in just 30 seconds
- View an 8" x 10" plate in 25 seconds

Call us for an in-office demo today.

**1-800-385-9593**

**TELEVERE**  
SYSTEMS

101 East Milwaukee Street, Suite 405 | Janesville, WI 53545 | p 800.385.9593

[televeresystems.com](http://televeresystems.com)



# ScanX®12 SE

Easy and Affordable Digital Imaging



## SPECIFICATIONS

Part Number	PN F3800
Dimensions	14.0" W x 14.0" L x 28.0" H
Weight	55 lbs
Electrical	60Hz 115V
Laser Classification	Class 1 Laser Product Compliance with FDA HHS 21 CFR 1040.10 and IEC 60825-1
Imaging Media	Phosphor storage plates: 10" x 12", 8" x10"
Accessories	Power Supply and Computer Connector Cord
Software	TigerView Professional Software



For complete product information, visit [televeresystems.com](http://televeresystems.com).



101 East Milwaukee Street, Suite 405 | Janesville, WI 53545 | P 800.385.9593